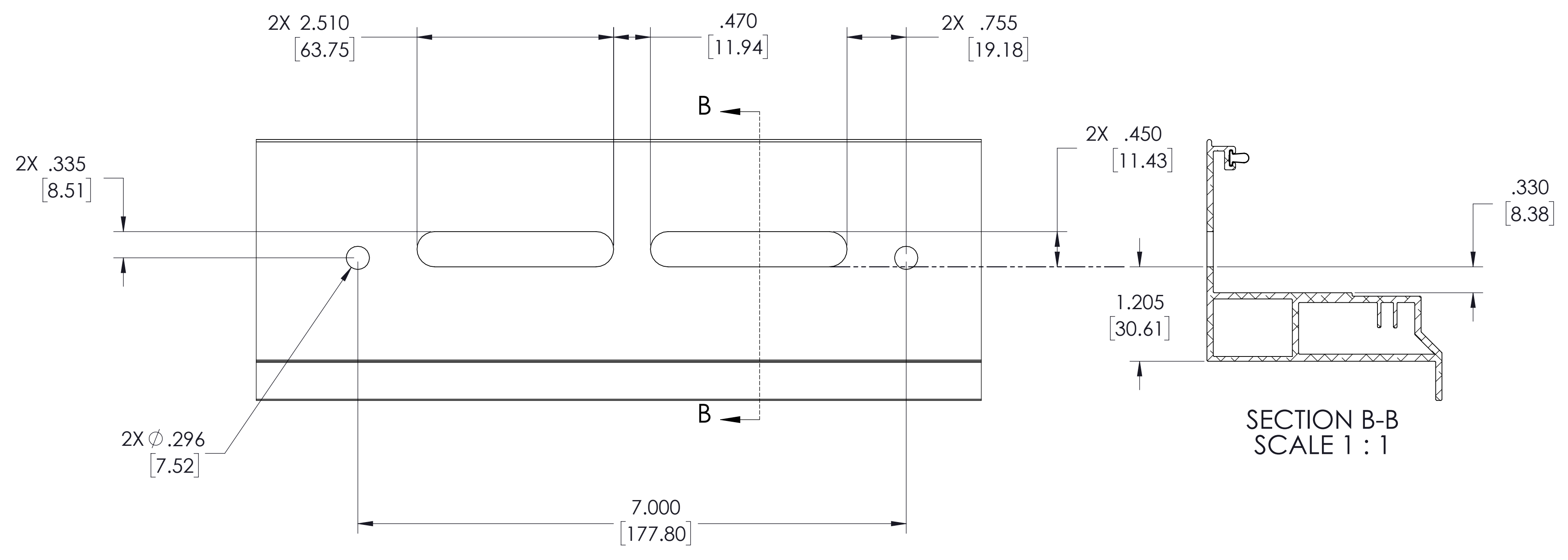
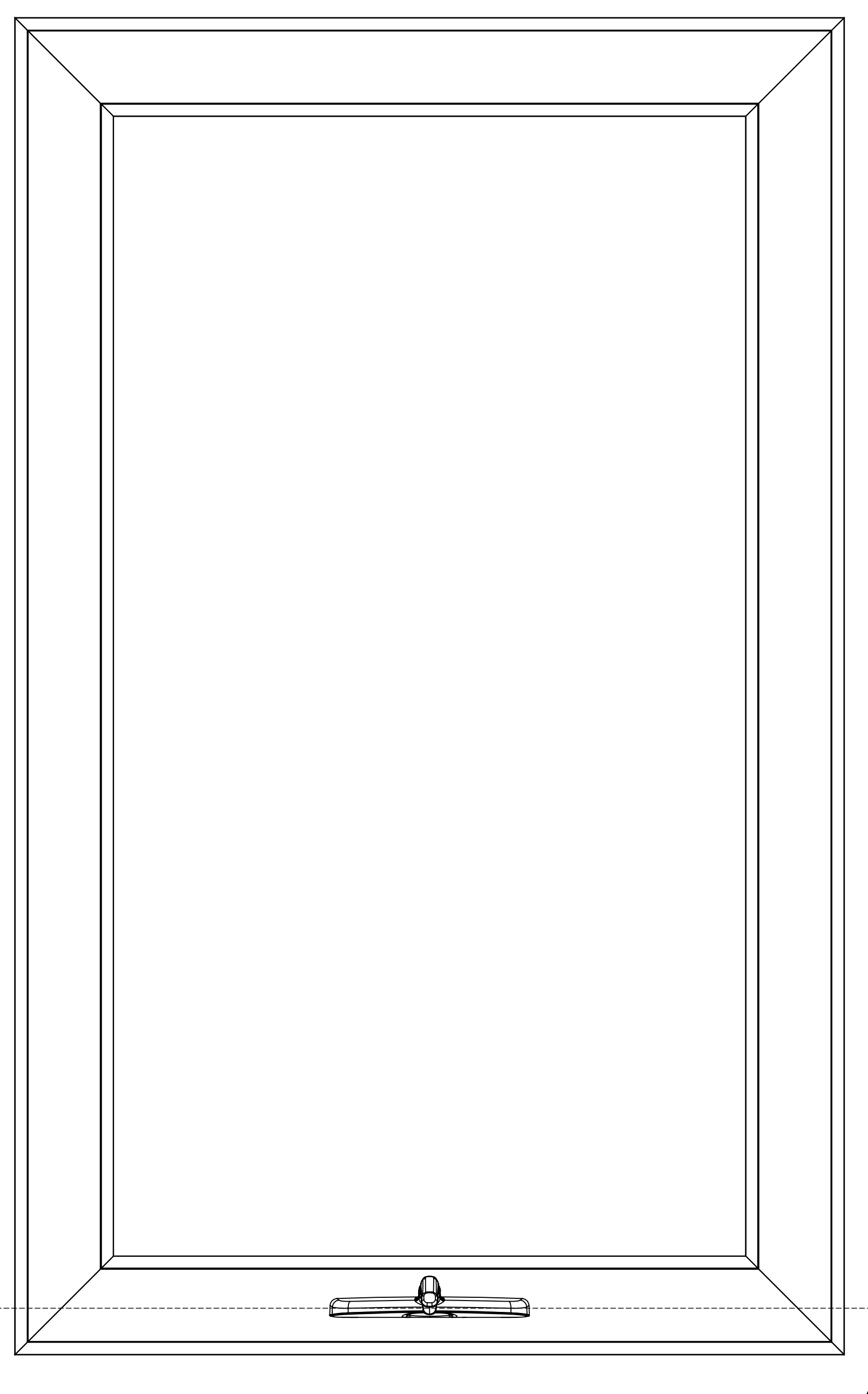
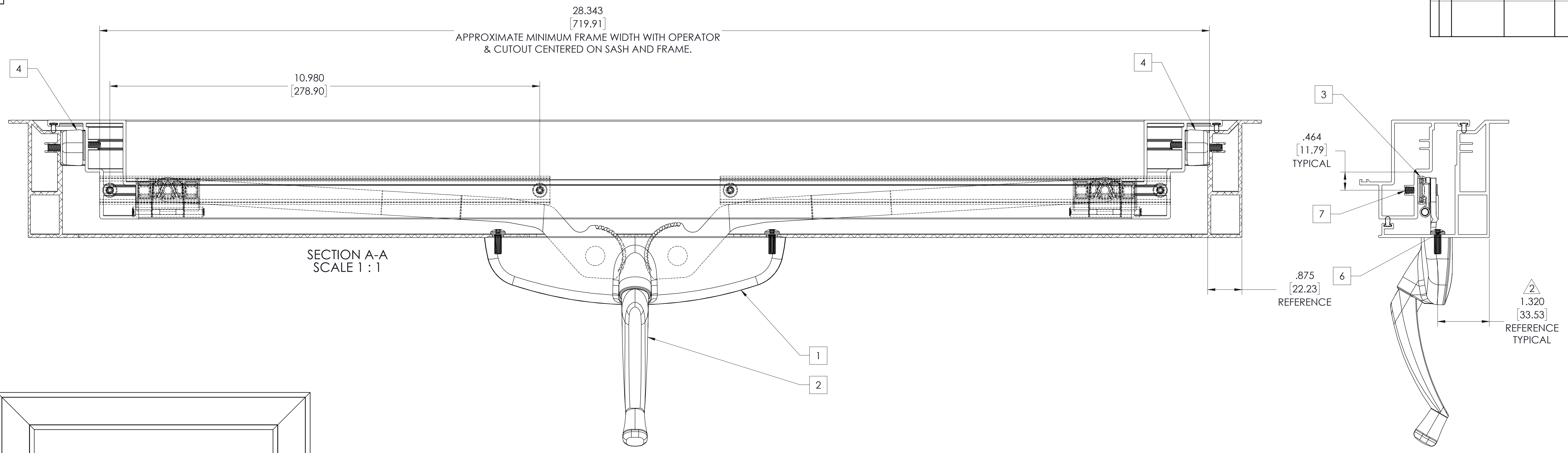


NO.	REV.	DATE	BY

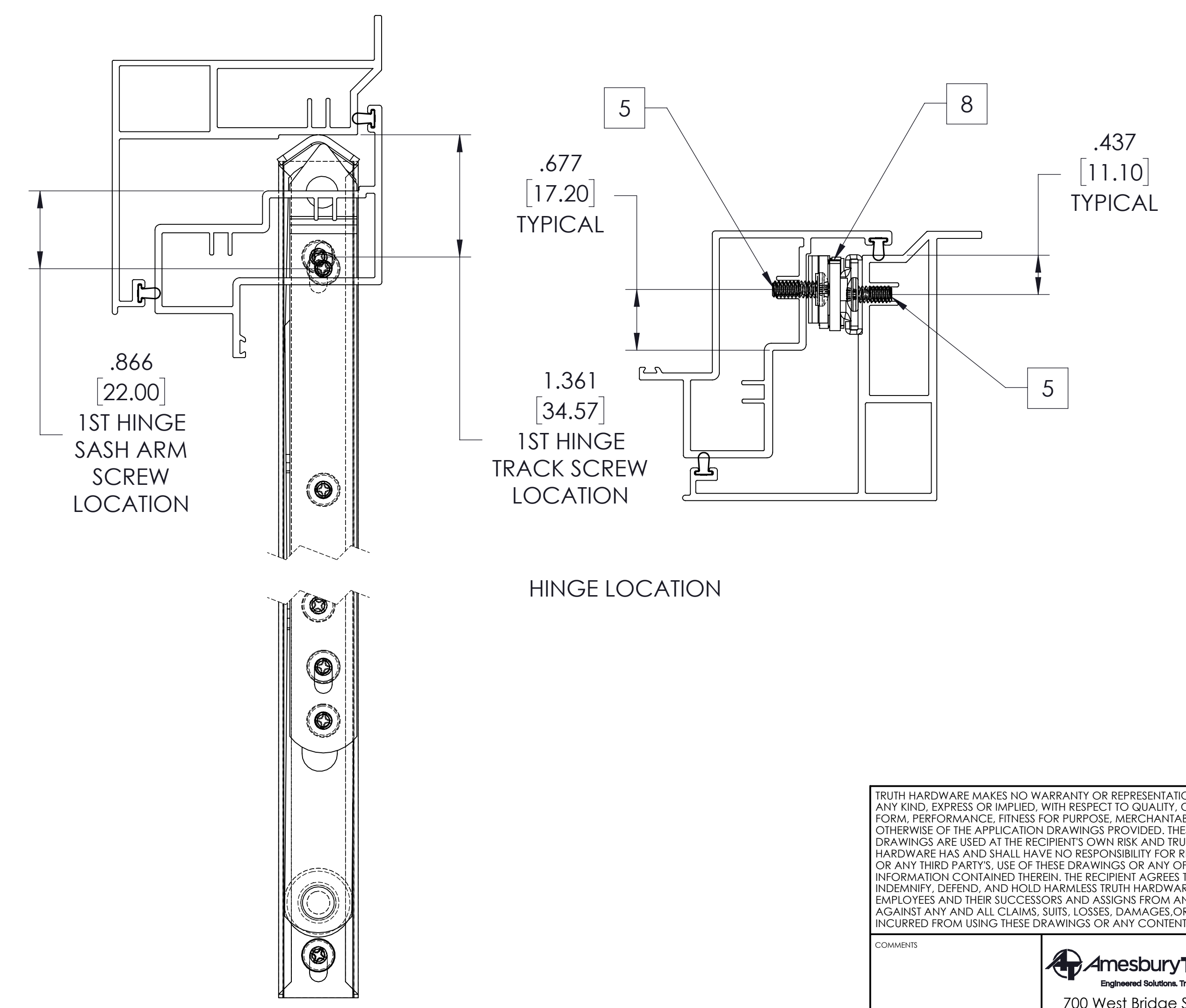


4-BAR HINGE APPLICATION TABLE FOR AWNINGS

HINGE CALL OUT AND ACTUAL LENGTH	AAMA CYCLE TESTED COUNTER BALANCED		ULTIMATE UNBALANCED CAPACITY		DEGREES OF OPENING STD. STOP
	VENT HEIGHT RANGE	MAX SASH VENT	VENT HEIGHT RANGE	MAX SASH VENT	
34.24.00.208.1	10.50"	12"-20"	58 LBS	12"-20"	59'
34.25.00.208.1	12.50"	20"-25"	73 LBS	20"-25"	53'
34.26.00.208.1	14.50"	23"-29"	85 LBS	23"-29"	50'
34.27.00.208.1	16.50"	25"-34"	99 LBS	25"-34"	50'
34.28.00.208.1	18.50"	32"-37"	108 LBS	32"-37"	50'
34.29.00.208.1	20.50"	34"-40"	117 LBS	34"-40"	49'
34.31.00.208.1	24.50"	40"-44"	129 LBS	40"-44"	44'
34.86.00.208.1	28.50"	50"-64"	175 LBS	50"-64"	42'

ITEM NO.	PART NUMBER	DESCRIPTION	QTY.
1	55.10.XX.201	AWNING OPERATOR, PIVOT SHOE, 27.75, CONTOUR	1
2	11454	HANDLE	1
3	24035.1	Track	2
4	34.25.00.208 (SHOWN)	hinge 12 INCH WITH STOP	2
5	N-A	SCREW, 10-24 X 1/2 F PH PH MS S318-B	AR
6	N-A	SCREW, 10-32 X 1/2 T23 PH PH MS YZF	2

NOTE:
 1. IT IS IMPORTANT THAT THE HINGE AND SASH HEIGHT BE PROPERLY MATCHED TO ENSURE MAXIMUM OPERATOR EFFICIENCY AND AVOID SASH CHATTER. FOR MORE COMPLETE INFORMATION ON PROPER HINGE SIZING AND HOW TO OVERCOME CORNER PULL-IN PROBLEMS, SEE TRUTH TECH NOTE #2.
 2. HOLD THESE DIMENSIONS AS CLOSE TO THEIR MINIMUM AS MANUFACTURING TOLERANCES ALLOW.
 3. IF PVC, MOUNTING SCREWS FOR ALL OPERATOR HARDWARE SHOULD PASS THRU TWO WALLS OR A SINGLE WALL WITH AN INTERIOR METAL INSERT.
 4. SEE TRUTH HARDWARE CATALOG FOR FURTHER INFORMATION ON APPLICATIONS OF OPERATOR COMPONENTS.
 5. ALL DIMENSIONS ARE AFTER WELD.



TRUTH HARDWARE MAKES NO WARRANTY OR REPRESENTATION OF ANY KIND, EXPRESS OR IMPLIED, WITH RESPECT TO QUALITY, CONTENT, FORM, PERFORMANCE, FITNESS FOR PURPOSE, MERCHANTABILITY OR OTHERWISE OF THE APPLICATION DRAWINGS PROVIDED. THESE DRAWINGS ARE USED AT THE RECIPIENT'S OWN RISK AND TRUTH HARDWARE HAS AND SHALL HAVE NO RESPONSIBILITY FOR RECIPIENTS OR ANY THIRD PARTIES' USE OF THESE DRAWINGS OR ANY OF THE INFORMATION CONTAINED THEREIN. THE RECIPIENT AGREES TO INDEMNIFY, DEFEND, AND HOLD HARMLESS TRUTH HARDWARE AND ITS EMPLOYEES AND THEIR SUCCESSORS AND ASSIGNS FROM AND AGAINST ANY AND ALL CLAIMS, SUITS, LOSSES, DAMAGES OR COSTS INCURRED FROM USING THESE DRAWINGS OR ANY CONTENT THEREOF.

Amesbury Truth
 700 West Bridge Street
 Owatonna, MN 55060
 Telephone 507-451-5620

DATE	2/23/2022
SCALE	1:4
REVISION	A
DATE	2/23/2022
SCALE	1:4
REVISION	A